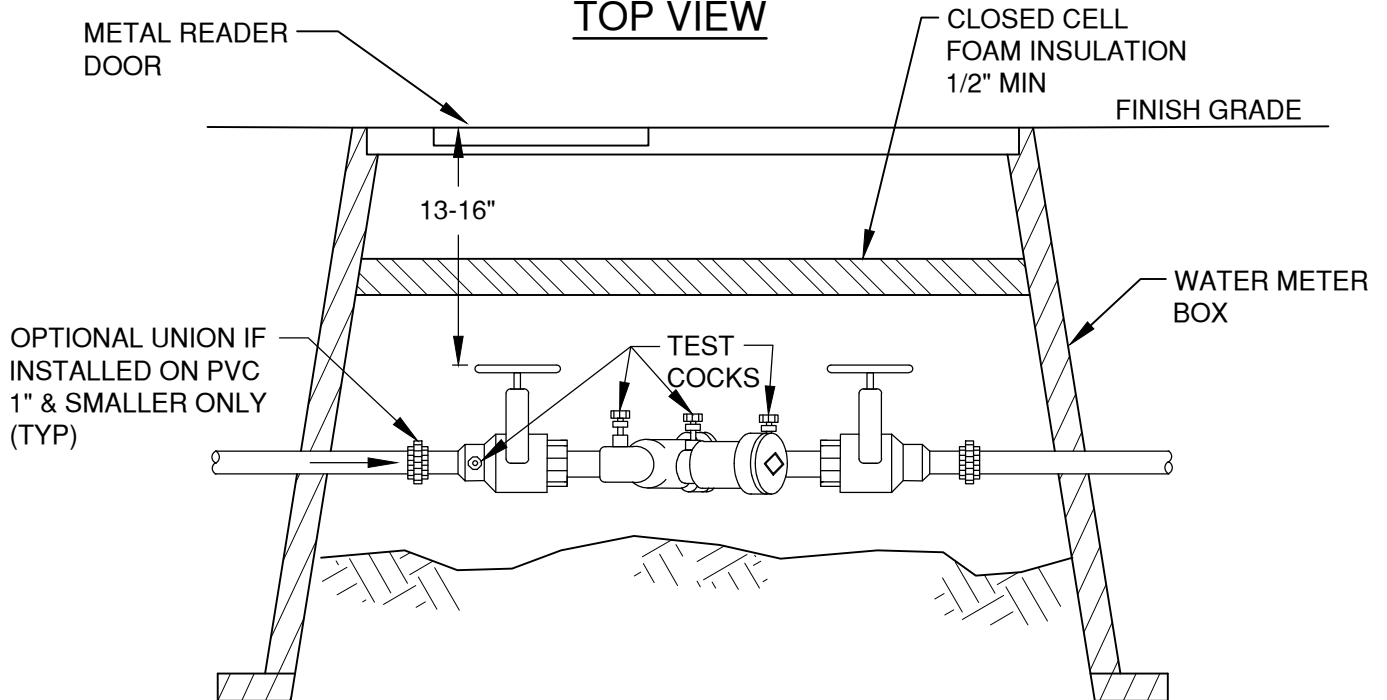


TOP VIEW



SIDE VIEW

NOTES:

1. DOUBLE CHECK VALVE ASSEMBLIES (DCVAs) MAY BE INSTALLED VERTICAL AS WELL AS HORIZONTAL PROVIDED THAT THE ASSEMBLY IS APPROVED FOR VERTICAL INSTALLATIONS
2. DCVAs MAY BE INSTALLED BELOW GRADE IN A VAULT PROVIDED WATER TIGHT, THREADED PLUGS ARE INSTALLED IN THE TEST COCKS, BUT THE ASSEMBLY SHALL NOT BE SUBJECT TO CONTINUOUS IMMERSION
3. BLOWOUT PORTS, WHEN REQUIRED MUST BE INSTALLED DOWNSTREAM OF LAST ASSEMBLY SHUTOFF

DRAWN AJD
DIV WATER
REV DATE



CITY OF BEND

CITY OF BEND

STANDARD DRAWING

710 NW WALL ST., BEND, OREGON 97701

TYPICAL DCVA INSTALLATIONS 2" AND SMALLER

SCALE NTS

DATE 01/31/2022

APPR

STD DWG W-13