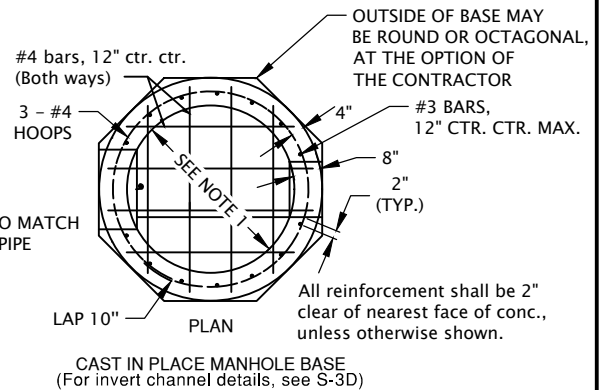
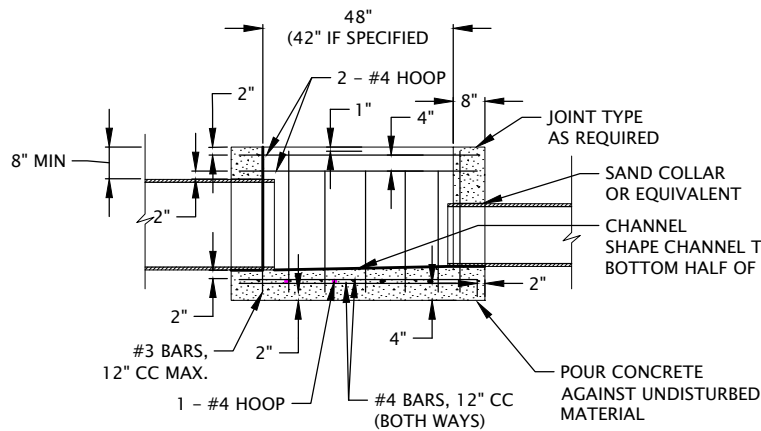
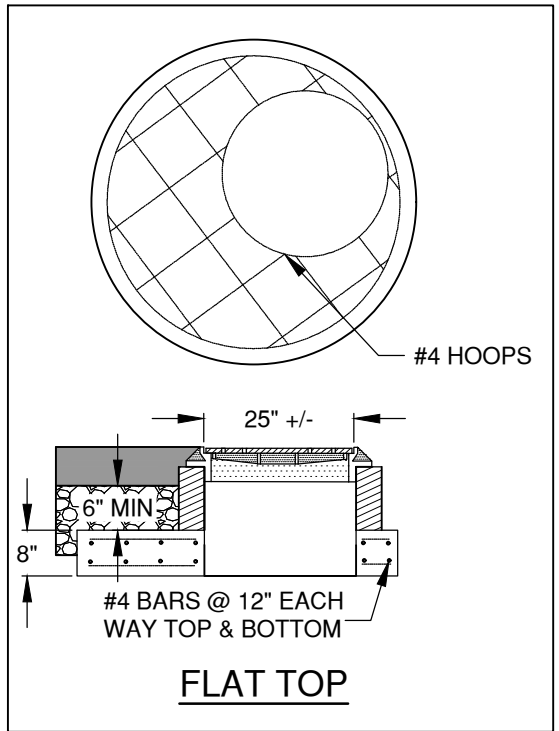



STANDARD MANHOLE WITH PRECAST BASE



CAST IN PLACE MANHOLE BASE

GENERAL NOTES:

1. MANHOLE DIAMETER PER CITY OF BEND DESIGN STANDARDS.
2. THE MAXIMUM INTERNAL DROP IS 1' FOR PIPES 8" IN DIAMETER OR LESS AND 2' FOR PIPES GREATER THAN 8" IN DIAMETER. SEE DWGS S-4 AND S-4A FOR LARGER DROPS.
3. ALL GROUT USED ON MANHOLES SHALL BE NON-SHRINK CONFORMING 02440.50.
4. A SINGLE RISER RING IS ALLOWED ON INITIAL INSTALLATION.

DRAWN AJD	 CITY OF BEND	CITY OF BEND STANDARD DRAWING 710 NW WALL ST., BEND, OREGON 97701	SCALE NTS
DIV SANITARY			DATE 11/01/2024
REV DATE			APPR
		STANDARD SEWER/STORM MANHOLE	STD DWG S-3C