



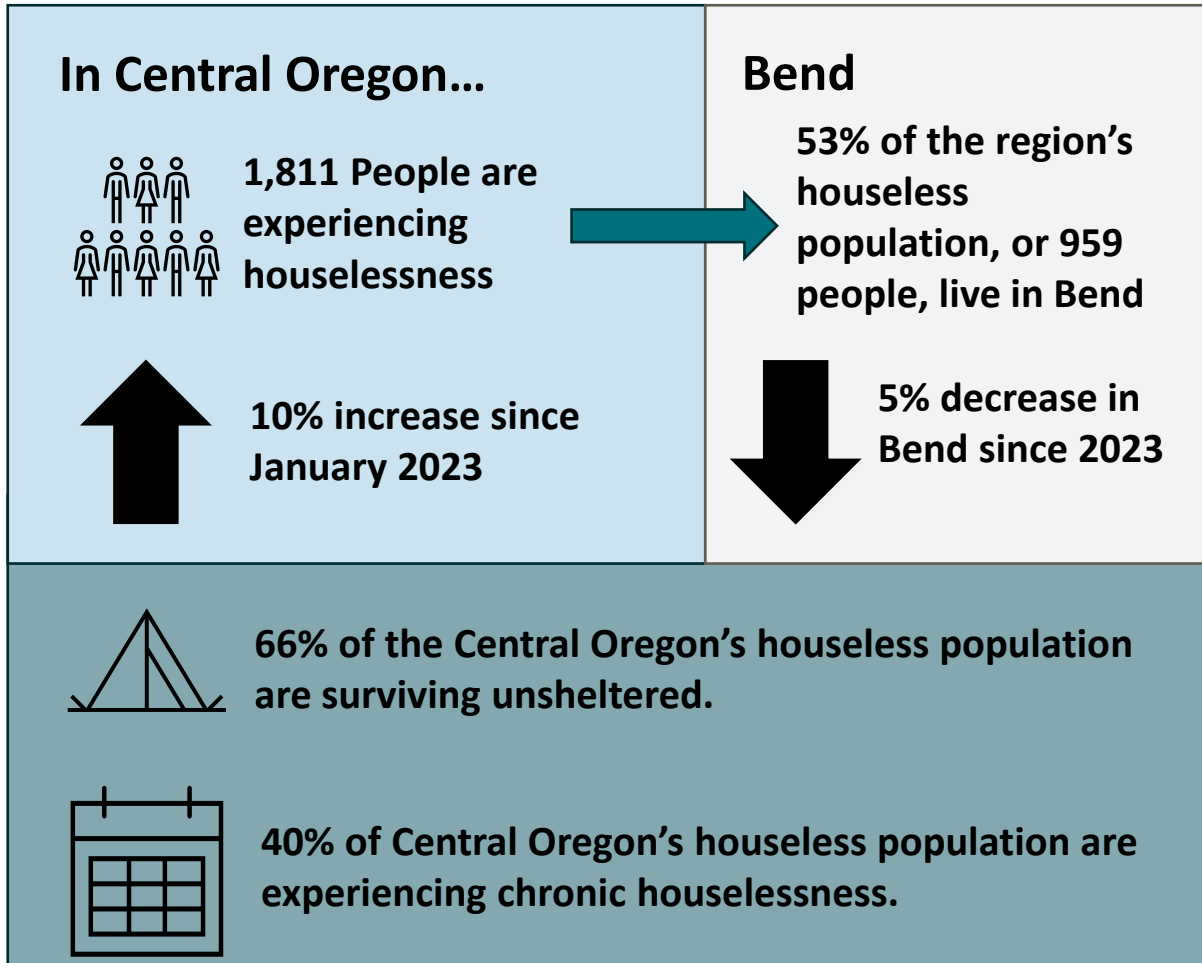
CITY OF BEND

# **Franklin Avenue Shelter Homelessness is a Housing Problem**

**Amy Fraley, Senior Program Manager – Houselessness Solutions  
Brook O'Keefe, Shelter Coordinator**

May 8, 2024

# 2024 Point-in-Time Count



Total Beds in Bend: 523

Low barrier beds in Bend: 216

People experiencing houselessness: 959

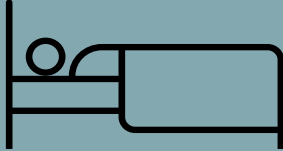
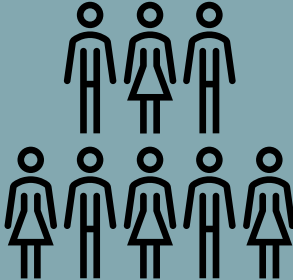

Shortage: 436 beds short



CITY OF BEND

# Franklin Avenue Shelter

- Opened May 2023
- Operator: Shepherd's House Ministries
- 60 Beds Low-Barrier Shelter
  - Families with minor children
  - Medically vulnerable
- Services:
  - Case management
  - Daily meals
  - Connections to provider partners

	<ul style="list-style-type: none"><li>• 15,300+ Nights of Shelter Provided</li></ul>
	<ul style="list-style-type: none"><li>• 170+ Unduplicated Clients<ul style="list-style-type: none"><li>○ 50 households w/ minor children</li></ul></li></ul>
	<ul style="list-style-type: none"><li>• 17 Transitions to Permanent Housing</li><li>• 1 Transition to Temporary Housing</li></ul>



# Franklin Avenue Shelter



## **May 2023 – June 2024**

- Agreement with Central Oregon Intergovernmental Council
  - Governor's Executive Order 23-02 Funds
    - Award: \$1,060,450
- City & County American Rescue Plan Act funds

## **COIC Intent to Award for July 2024 – June 2025 (FY25)**

- Additional award from Central Oregon Intergovernmental Council
  - Award: \$1,455,555
- Extend Contract with Shepherd's House (June 2025)
  - \$1,300,000 for Shepherd's House operations/admin costs
  - \$155,555 for City facilities & personnel costs



# ***Homelessness is a Housing Problem***

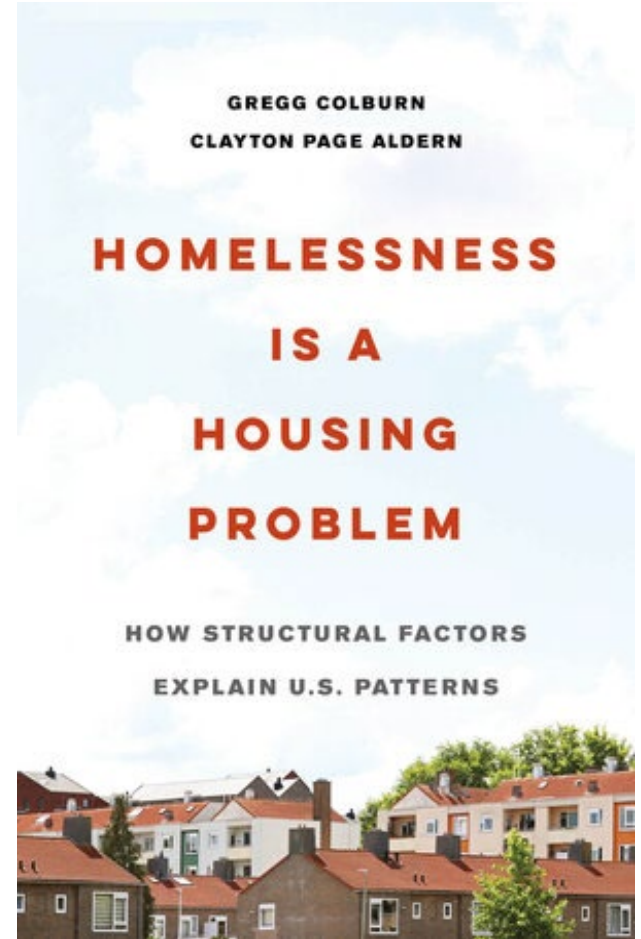
Dr. Gregg Colburn

Thursday, May 9<sup>th</sup> | Open Space Events Studio  
Presentation begins at 7pm  
Free | Preregistration is SOLD OUT

LIVESTREAM LINK AT

[HTTPS://VIMEO.COM/EVENT/3324616](https://vimeo.com/event/3324616)

Hosted by Building a Better Bend  
[buildingabetterbend.org](http://buildingabetterbend.org)



CITY OF BEND

# **Homelessness is a Housing Problem**

## **IT IS A BOOK ABOUT CITIES**

**THESIS:** Tight housing markets accentuate vulnerabilities. Spoiler alert it does.

## **HOUSING-RELATED FACTORS PREDICT RATES OF HOMELESSNESS**

- Rent levels and rental vacancy rates are associated with regional rates of homelessness.
- Cities lacking Housing Supply Elasticity have higher rates of homelessness.

## **INDIVIDUAL VULNERABILITIES LIKE POVERTY DON'T EXPLAIN REGIONAL VARIATION**

- Contrary to expectations, rates of homelessness tend to be lower where poverty rates are higher. Many other common explanations—drug use, mental illness, weather, available benefits, or local political context—fail to account for regional variation.
- Vulnerabilities act as a sorting mechanism in tight housing markets





# Causes of homelessness

Ten friends decide to play a game of musical chairs and arrange ten chairs in a circle. A leader begins the game by turning on the music, and everyone begins to walk in a circle inside the chairs. The leader removes one chair, stops the music, and the ten friends scramble to find a spot to sit—leaving one person without a chair. The loser, Mike, was on crutches after spraining his ankle. Given his condition, he was unable to move quickly enough to find a chair during the scramble that ensued.

- What caused Mike's chairlessness?



# Accommodation Information for People with Disabilities



To obtain this information in an alternate format such as Braille, large print, electronic formats, etc. please contact Brook O'Keefe at [bokeefe@bendoregon.gov](mailto:bokeefe@bendoregon.gov) or 541-604-5233; Relay Users Dial 7-1-1.

