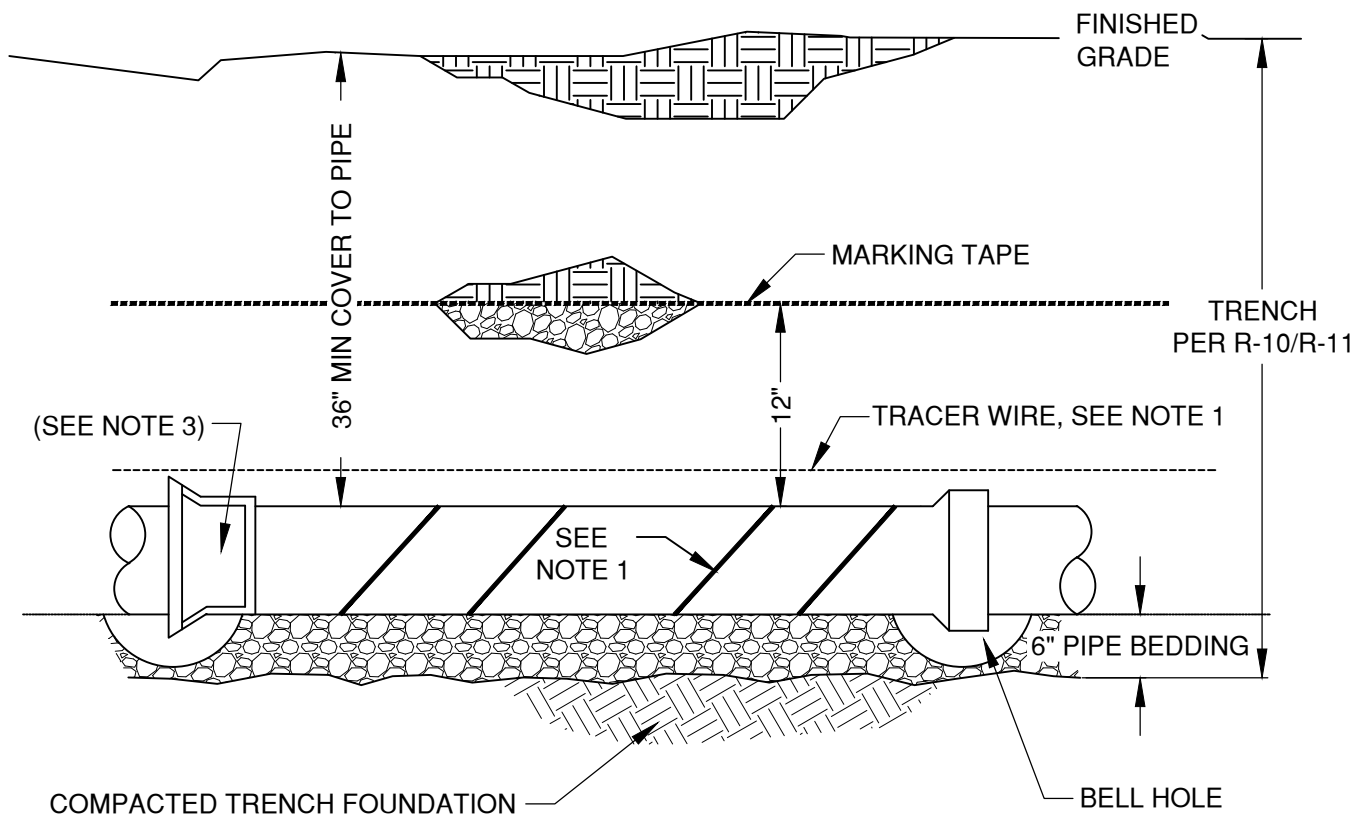


CITY OF BEND STANDARD DRAWINGS

Sanitary (S)



NOTES:

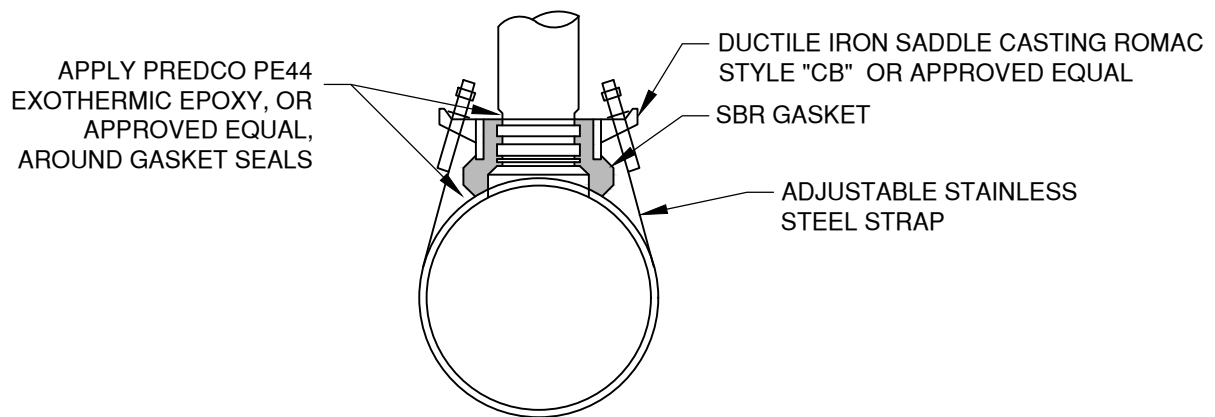
1. FOR PRESSURE AND VACUUM SEWER MAINS ONLY, TRACER WIRE SHALL BE CENTERED ON TOP OF THE MAIN, AS CLOSE TO THE MAIN AS POSSIBLE. THE MAIN SHALL BE WRAPPED WITH MARKING TAPE A MIN OF 4 WRAPS PER 20 FEET OF MAIN. TRACER WIRE IS NOT REQUIRED ON GRAVITY SEWER MAIN.
2. PLACE TRACER WIRE ON GRAVITY, PRESSURE, AND VACUUM SEWER SERVICES. TRACER WIRE AND MARKING TAPE TO BE PER SPECIFICATION SECTION 00445.11.
3. TRANSITION FITTING SHALL BE A HARD COUPLER WHERE CHANGING PIPE MATERIAL
4. WHEN A SEWER LINE IS LOCATED ABOVE OR WITHIN 18" BELOW A WATERLINE, THE SEWER SHALL BE CONSTRUCTED WITH A MIN OF 20 LF OF AWWA C900 OR AWWA C905 PIPE CENTERED AT THE WATERLINE PER OAR 333-061-0050(9) AND BE APPROVED BY CITY/STATE.
5. WHEN INSTALLING A WATER LINE THAT CROSSES BELOW OR WITHIN 18 INCHES ABOVE A NON-POTABLE LINE, FOLLOW OAR 333-061-0050(9). ALL NON-POTABLE LINES SHALL BE TREATED AS "SEWER" LINES AS DESCRIBED IN OAR 333-061-0050(9).
6. COMPACTION SHALL MEET 00405.46(c) PER COB SPECIAL PROVISIONS

DRAWN AJD	 CITY OF BEND	<p align="center">CITY OF BEND</p> <p align="center">STANDARD DRAWING</p> <p align="center">710 NW WALL ST., BEND, OREGON 97701</p>	SCALE NTS
DIV SANITARY			DATE 01/31/2022
REV DATE			APPR
		SEWER MAIN TYPICAL PROFILE	STD DWG S-1



TEE SERVICE CONNECTION


DRAWN AJD			CITY OF BEND		SCALE NTS
DIV SANITARY			STANDARD DRAWING		DATE 03/22/2023
REV	DATE		710 NW WALL ST., BEND, OREGON 97701		APPR
			GRAVITY SEWER/STORM SERVICES ON NEW MAINS		STD DWG S-2A
					CITY OF BEND



SEWER SADDLE
FOR USE ON MAINS 12" AND SMALLER

NOTES:

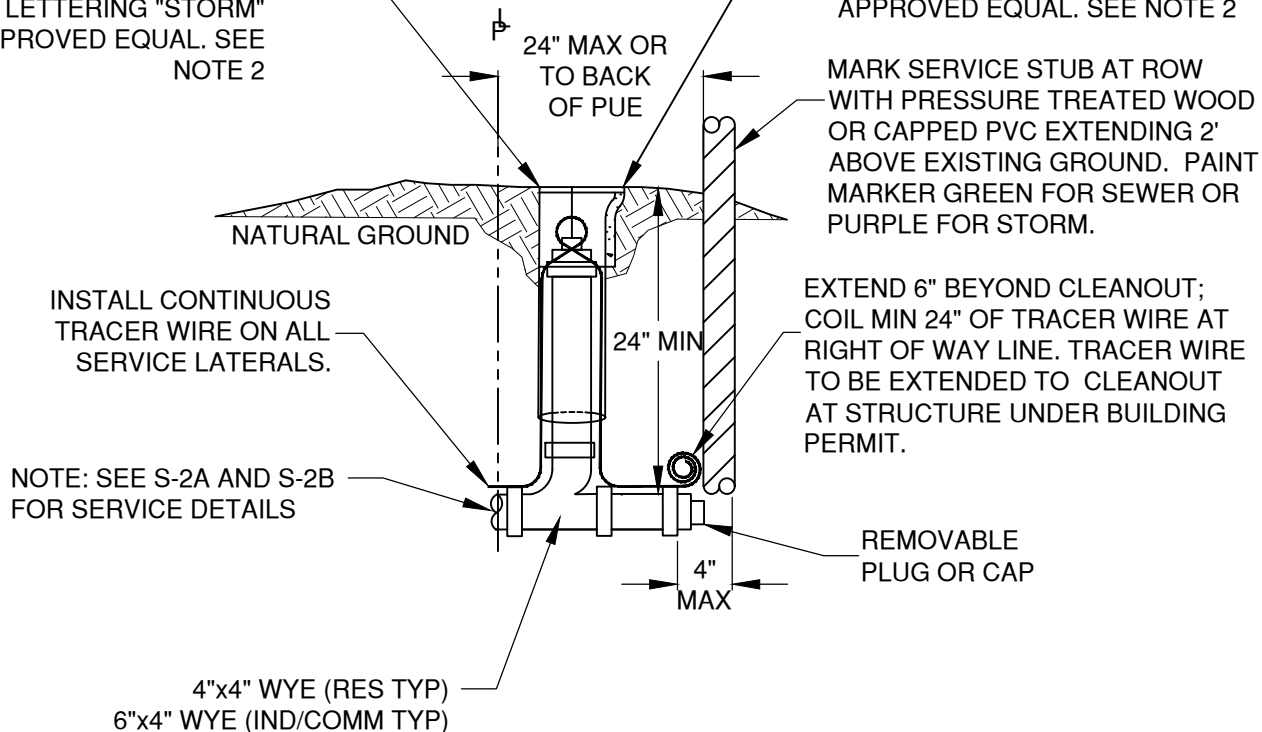
1. INSTALL SERVICE LATERAL PER STD DWG S-2A
2. CONNECTION TO EXISTING MAINS MAY BE CUT-IN FITTINGS PER STD DWG S-2A OR TAPS PER THIS DETAIL. PVC MAINS TO UTILIZE CUT IN FITTINGS.
3. SEWER SADDLE SHALL BE ROMAC STYLE "CB" OR APPROVED EQUAL.
4. INSTALL CONNECTION PER THE MANUFACTURER'S RECOMMENDATIONS.
5. GASKET SEAL EPOXY NOT TO BE INSTALLED ON PVC MAINS.

DRAWN AJD		<p style="text-align: center;">CITY OF BEND</p>	SCALE NTS
DIV SANITARY			DATE 03/22/2023
REV DATE		<p style="text-align: center;">STANDARD DRAWING</p> <p style="text-align: center;">710 NW WALL ST., BEND, OREGON 97701</p>	APPR
		<p style="text-align: center;">GRAVITY SEWER/STORM SERVICE CONNECTION TO EXISTING MAIN</p>	STD DWG S-2B

CITY OF BEND

STORM: 4" CLEANOUT, USE
6" C900 VERTICAL STAND
PIPE (MIN. 18" LENGTH)
WITH CAST IRON LID WITH
CAST LETTERING "STORM"
OR APPROVED EQUAL. SEE
NOTE 2

SEWER: 4" CLEANOUT, USE 6" C900
VERTICAL STAND PIPE (MIN. 18"
LENGTH) AND CAST IRON LID WITH
CAST LETTERING "SEWER" OR
APPROVED EQUAL. SEE NOTE 2



NOTE: SEE S-2A AND S-2B
FOR SERVICE DETAILS

NOTES:

1. SEE STD DWG S-2A FOR GENERAL NOTES.
2. INSTALL CONCRETE BROOKS BOX WITH
CAST IRON LID ON ALL CLEANOUTS
WITHIN HARDSCAPE.

DRAWN AJD
DIV SANITARY
REV DATE



CITY OF BEND

CITY OF BEND

STANDARD DRAWING

710 NW WALL ST., BEND, OREGON 97701

GRAVITY SEWER/STORM CLEANOUT

SCALE NTS

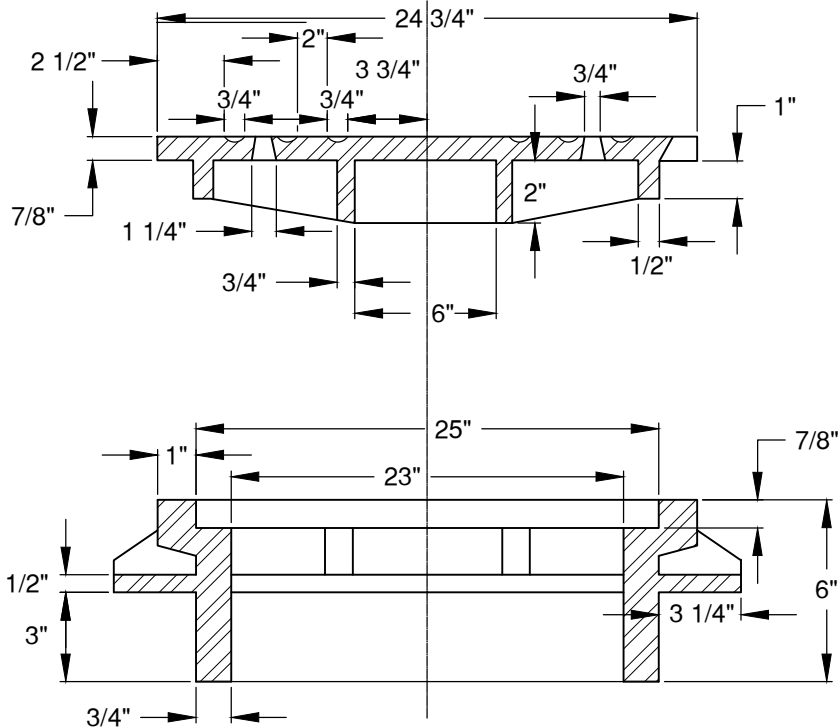
DATE 03/22/2023

APPR


STD DWG S-2C

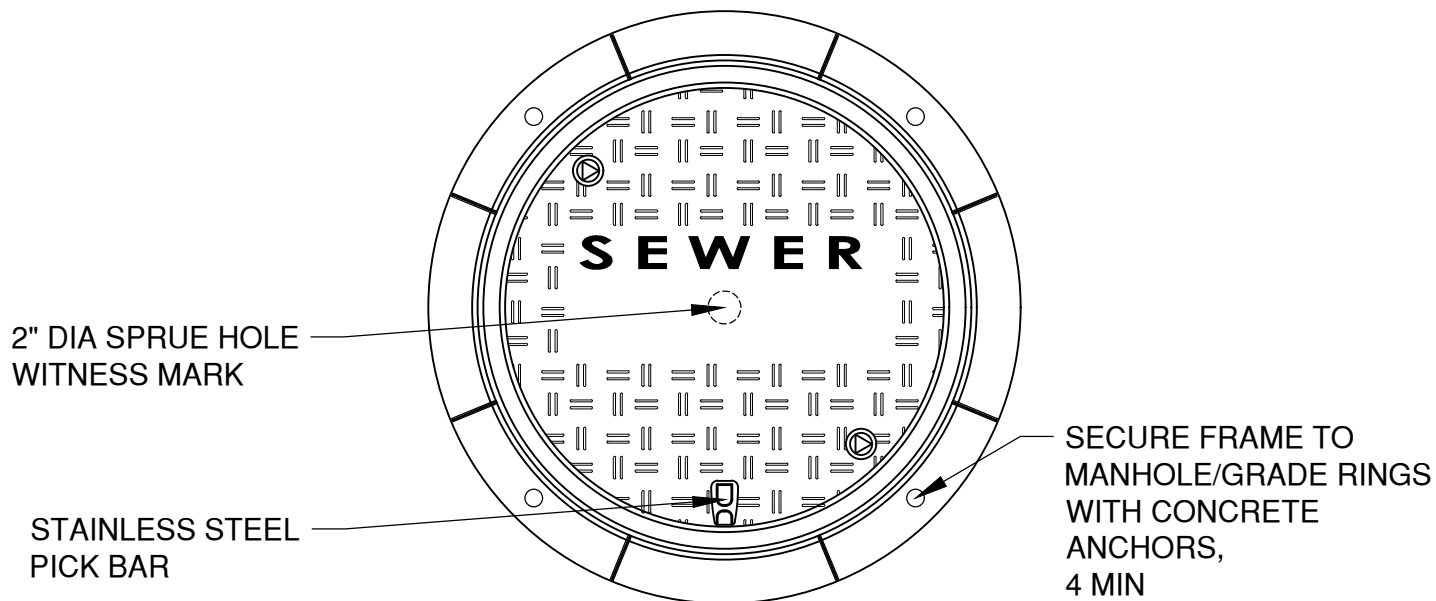


SEWER MANHOLE LID DETAIL



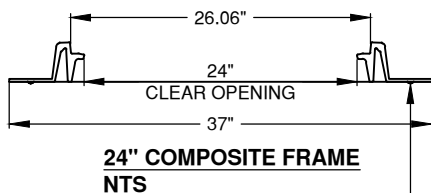
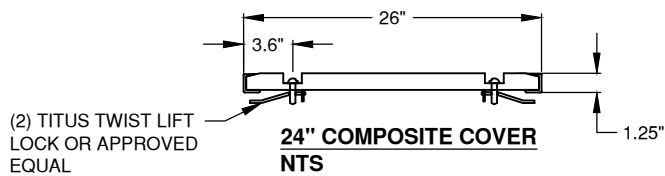
1. CITY SANITARY SEWER MANHOLE COVERS SHALL HAVE THE WORD "SEWER" CAST IN 2" RAISED LETTERS.
2. PRIVATE MANHOLE LIDS SHOULD NOT USE THE CITY OF BEND MANHOLE LID DETAIL.
3. HINGED MANHOLE LIDS ARE NOT PERMITTED UNLESS OTHERWISE APPROVED BY THE CITY ENGINEER.
4. LOCKS ARE TO BE USED ON THE LID WHEN THE LID IS LOCATED OUTSIDE A ROADWAY IF REQUIRED BY THE CITY ENGINEER.
5. MANHOLE LIDS SHALL BE PLACED OUTSIDE THE PATH OF TRAVEL ON SIDEWALKS AND DRIVEWAY APRONS.

DRAWN AJD			<p align="center">CITY OF BEND</p> <p align="center">STANDARD DRAWING</p> <p align="center">710 NW WALL ST., BEND, OREGON 97701</p>	SCALE NTS
DIV SANITARY				DATE 01/31/2022
REV	DATE			APPR
		CITY OF BEND	STANDARD SEWER MANHOLE RING & COVER	STD DWG S-3A

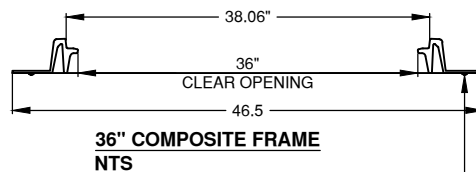
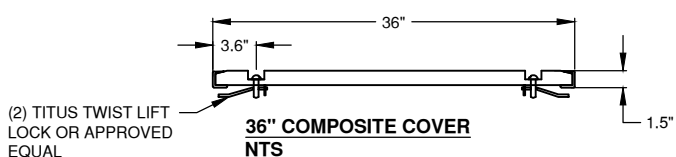


COMPOSITE COVER/FRAME ASSEMBLY NTS

FOR USE IN NON-TRAFFIC AREAS ONLY



APPLY WATER REPELLANT SEALER AROUND
ENTIRE FRAME CIRCUMFERENCE PRIOR TO
TIGHTENING THE CONCRETE ANCHORS.



APPLY WATER REPELLANT SEALER AROUND
ENTIRE FRAME CIRCUMFERENCE PRIOR TO
TIGHTENING THE CONCRETE ANCHORS.

DRAWN AJD
DIV SANITARY
REV DATE



CITY OF BEND

CITY OF BEND

STANDARD DRAWING

710 NW WALL ST., BEND, OREGON 97701

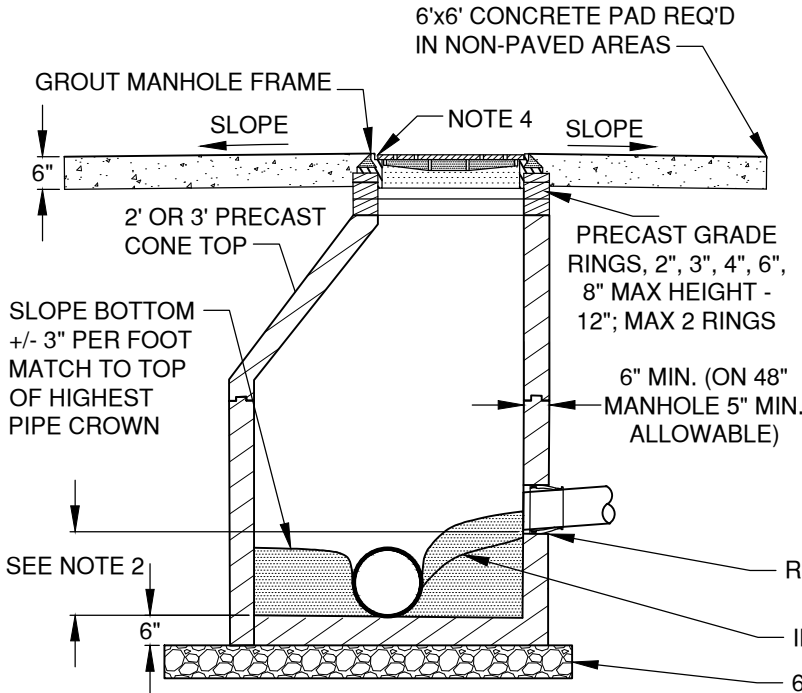
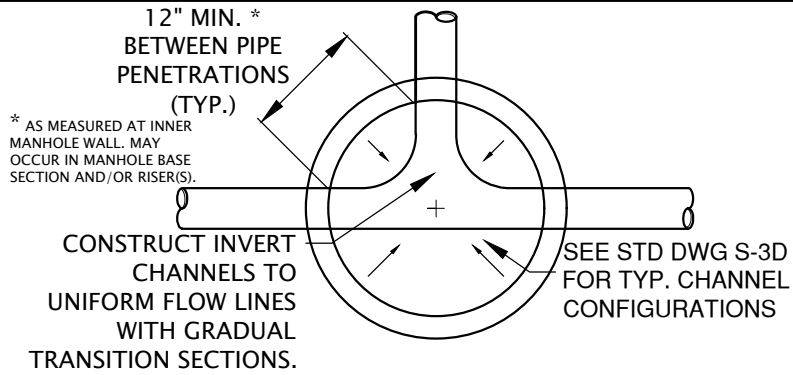
COMPOSITE MANHOLE FRAME AND COVER

SCALE NTS

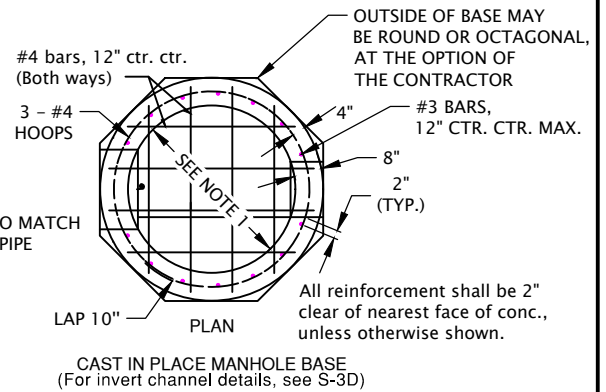
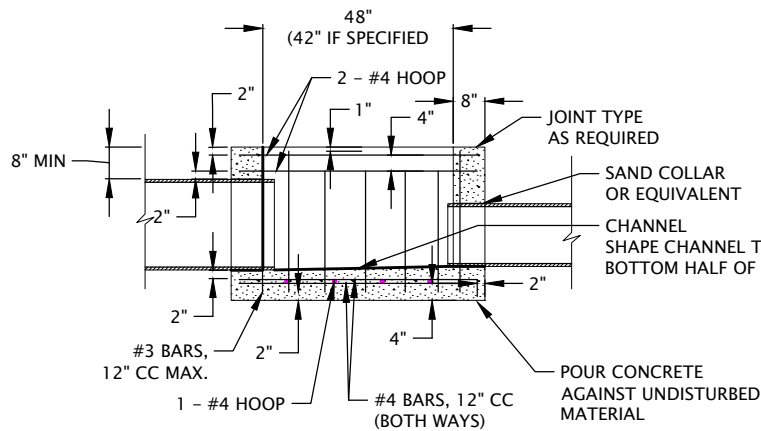
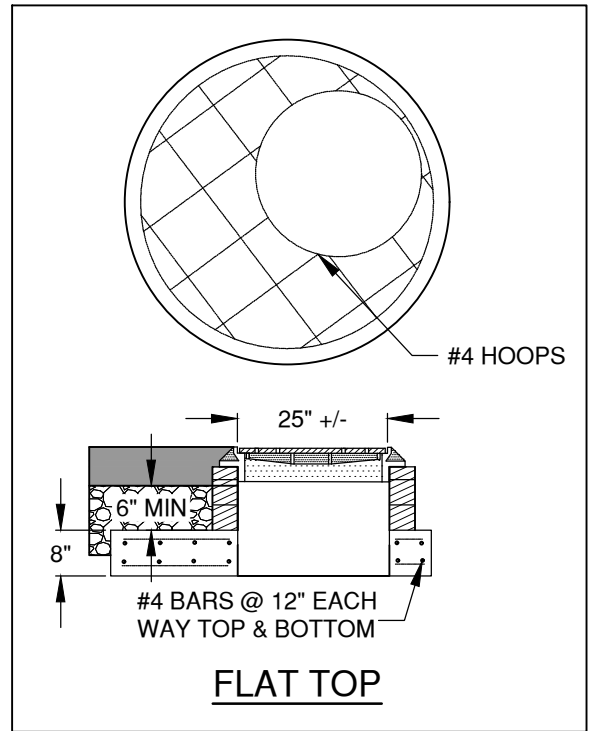
DATE 01/31/2022

APPR

STD DWG S-3B



STANDARD MANHOLE WITH PRECAST BASE



CAST IN PLACE MANHOLE BASE

GENERAL NOTES:

1. MANHOLE DIAMETER PER CITY OF BEND DESIGN STANDARDS.
2. THE MAXIMUM INTERNAL DROP IS 1' FOR PIPES 8" IN DIAMETER OR LESS AND 2' FOR PIPES GREATER THAN 8" IN DIAMETER. SEE DWGS S-4 AND S-4A FOR LARGER DROPS.
3. ALL GROUT USED ON MANHOLES SHALL BE NON-SHRINK.
4. A SINGLE RISER RING IS ALLOWED ON INITIAL INSTALLATION.

DRAWN A.J.D.
DIV SANITARY
REV DATE



CITY OF BEND

CITY OF BEND

STANDARD DRAWING

710 NW WALL ST., BEND, OREGON 97701

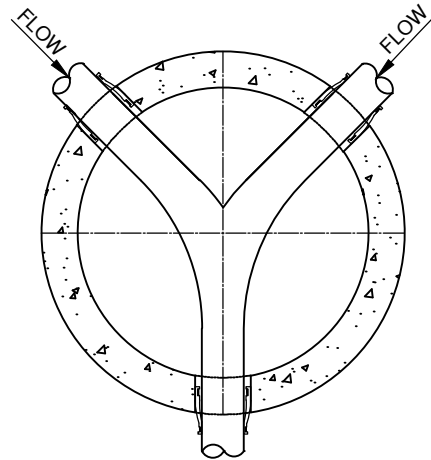
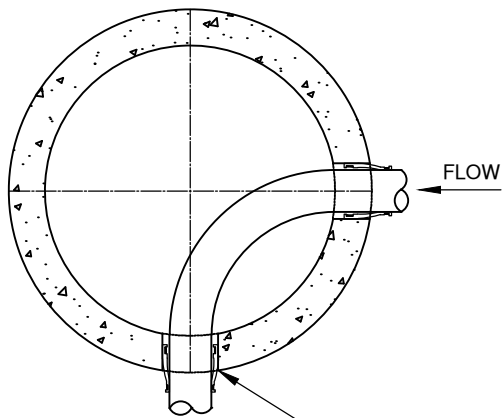
STANDARD SEWER/STORM MANHOLE

SCALE NTS

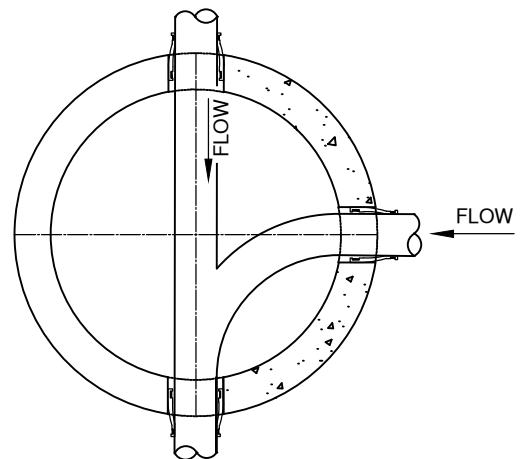
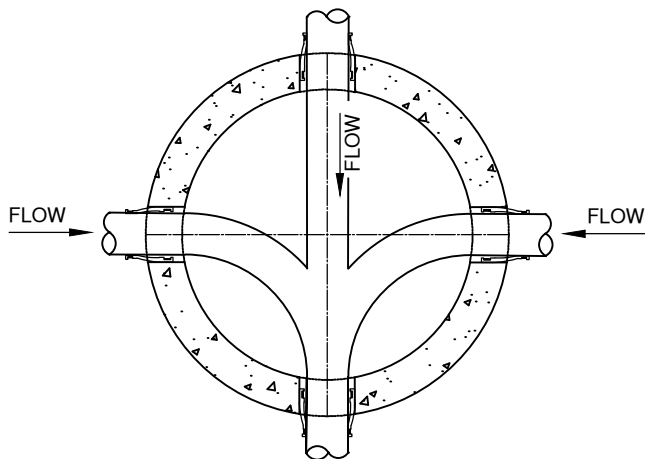
DATE 03/22/2023

APPR

STD DWG S-3C



RESILIENT CONNECTOR WITH GROUT
FOR PRECAST BASE. SAND COLLAR OR
EQUIVALENT IN POURED IN PLACE BASE.



GENERAL NOTES:

1. FLOW CHANNELS DEVIATING FROM THE STANDARD CHANNELS REQUIRE A DETAIL FOR APPROVAL FROM THE ENGINEER
2. WIDTH OF CHANNEL SHOULD MATCH THE INSIDE DIAMETER OF INCOMING AND OUTGOING PIPES.
3. CHANNEL LINING SHALL BE BLENDED FOR SMOOTH CONTOUR BETWEEN PIPES.
4. GROUT CHANNEL TO SMOOTH FINISH.
5. FINISH BOTTOM TO EVEN SLOPE BROOM FINISH TO DRAIN TO CHANNEL.
6. LOCATE MANHOLE OPENING OPPOSITE OUTLET UNLESS OTHERWISE DIRECTED.

DRAWN AJD
DIV SANITARY
REV DATE



CITY OF BEND

CITY OF BEND

STANDARD DRAWING

710 NW WALL ST., BEND, OREGON 97701

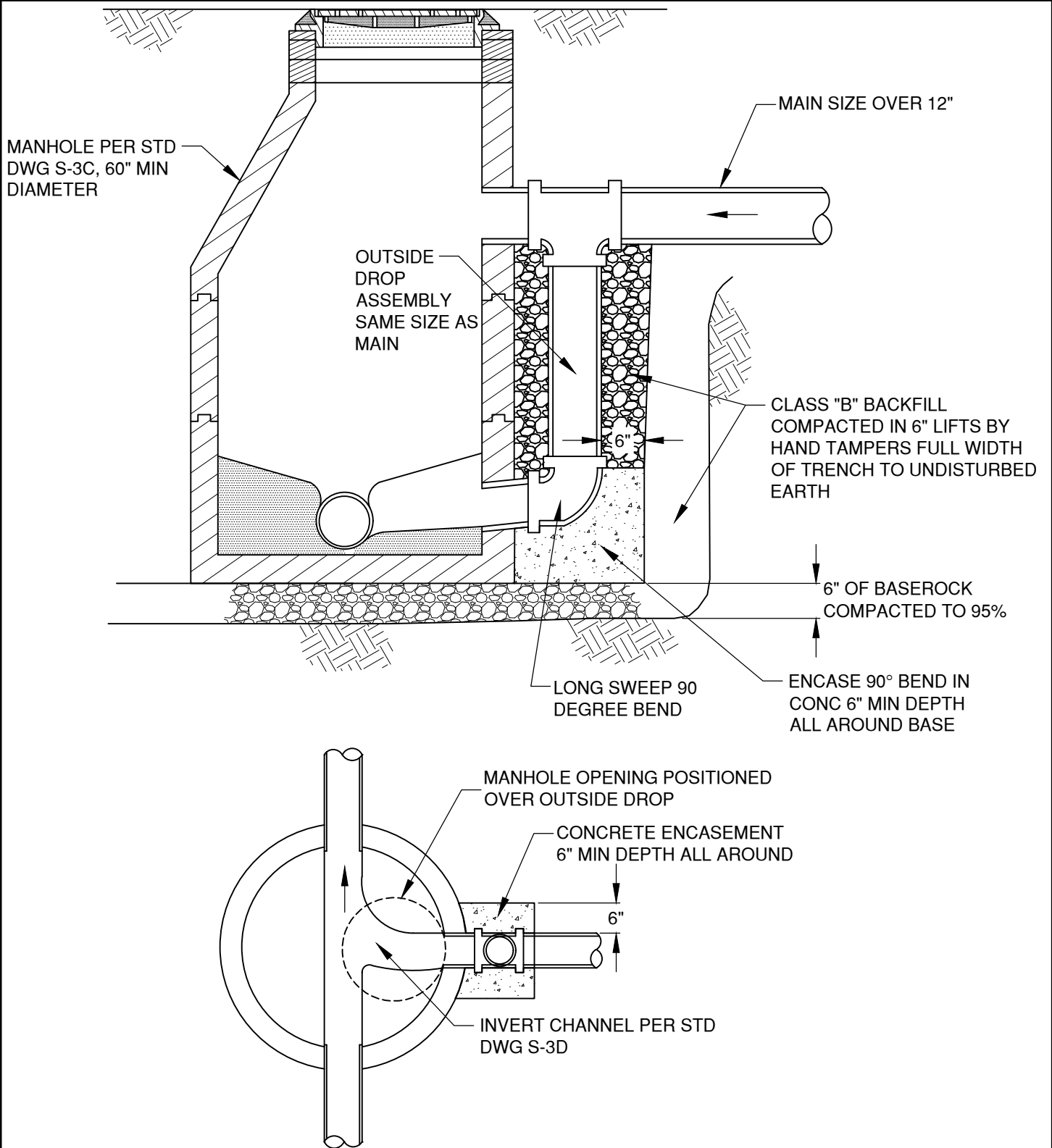
TYPICAL MANHOLE INVERT LAYOUT

SCALE NTS

DATE 01/31/2022

APPR

STD DWG S-3D



GENERAL NOTES:

1. OUTSIDE DROP MANHOLE FOR USE WITH MAIN SIZE OVER 12" ONLY

DRAWN	AJD
DIV	SANITARY
REV	DATE



CITY OF BEND

CITY OF BEND

STANDARD DRAWING

710 NW WALL ST., BEND, OREGON 97701

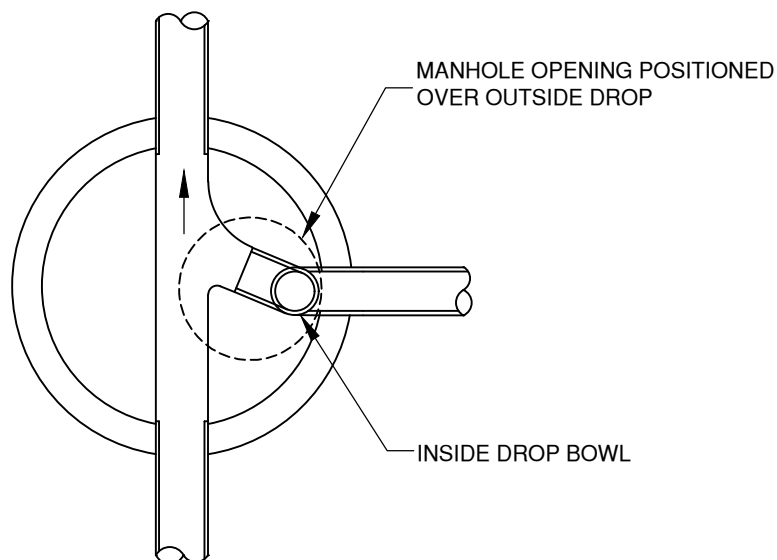
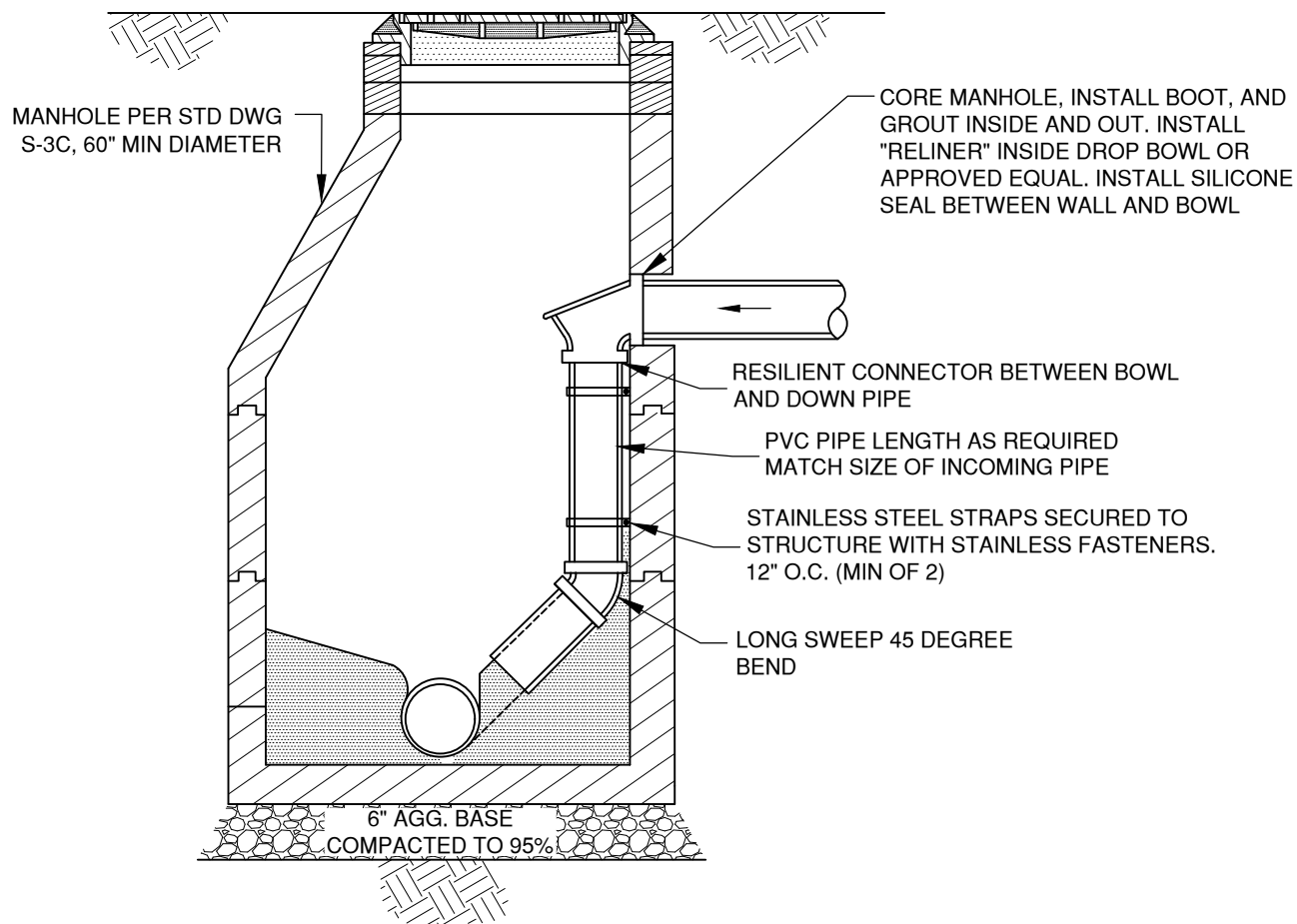
STANDARD OUTSIDE DROP - LARGER THAN 12" PIPE

SCALE NTS

DATE 01/31/2022


APPR

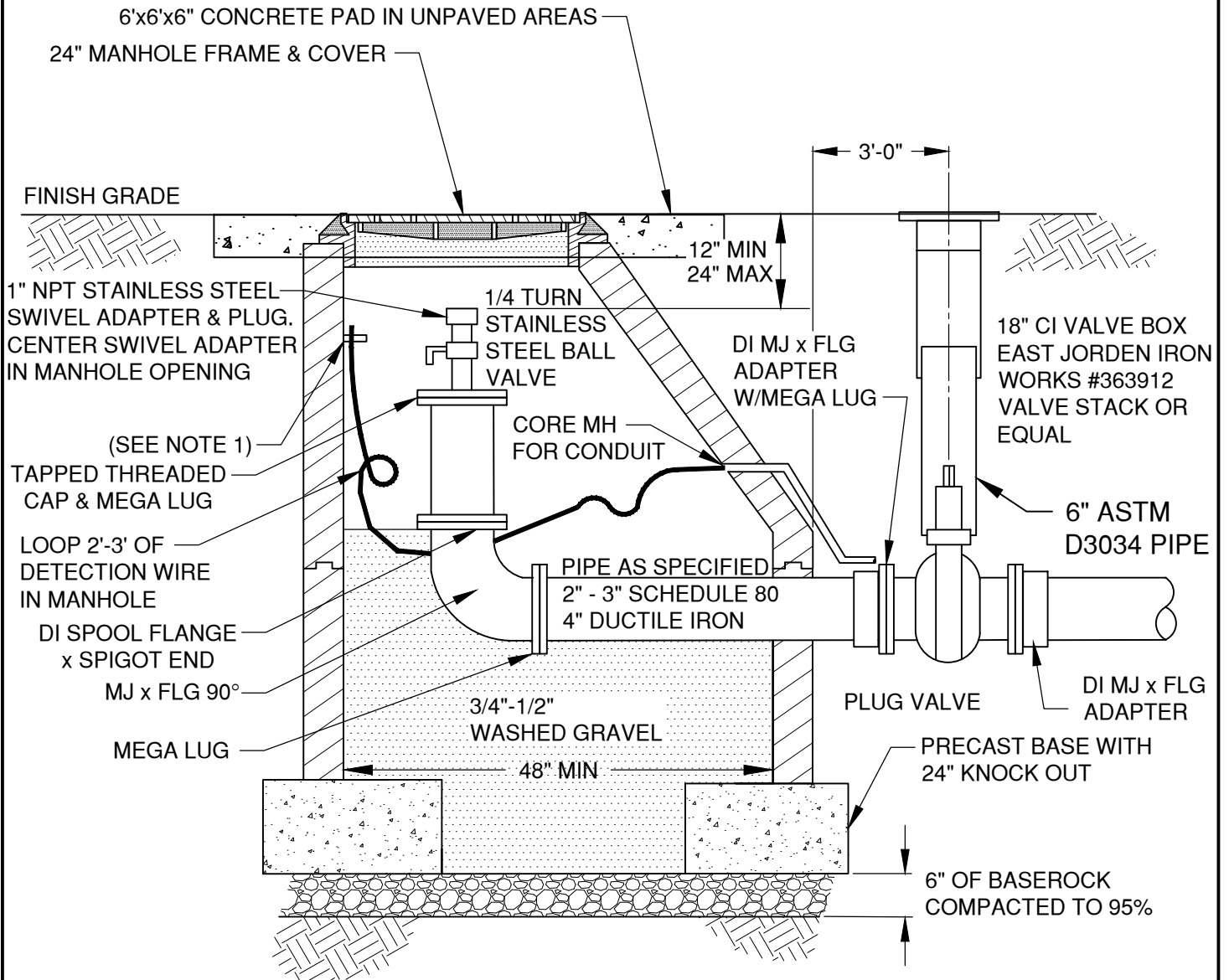
STD DWG S-4



NOTES:

1. INSIDE DROP MANHOLE FOR USE WITH MAIN SIZE 12" AND SMALLER ONLY

DRAWN AJD	 CITY OF BEND	<p align="center">CITY OF BEND</p> <p align="center">STANDARD DRAWING</p> <p align="center">710 NW WALL ST., BEND, OREGON 97701</p>	SCALE NTS
DIV SANITARY			DATE 01/31/2022
REV DATE			APPR
		STANDARD INSIDE DROP - 12" PIPE AND SMALLER	STD DWG S-4A



NOTES:

1. TRACER WIRE SHALL BE EXTENDED WITHIN 18-INCHES OF FINISHED GRADE OR 6" BELOW LOWEST GRADE RING, WHICH EVER IS GREATER, TO A 1.75-INCH STAINLESS STEEL RUBBER CUSHIONED CLAMP MOUNTED TO MANHOLE WITH AS MIN 1/4" X 1-3/4" CONCRETE ANCHOR SCREW.

DRAWN AJD
DIV SANITARY
REV DATE



CITY OF BEND

CITY OF BEND

STANDARD DRAWING

710 NW WALL ST., BEND, OREGON 97701

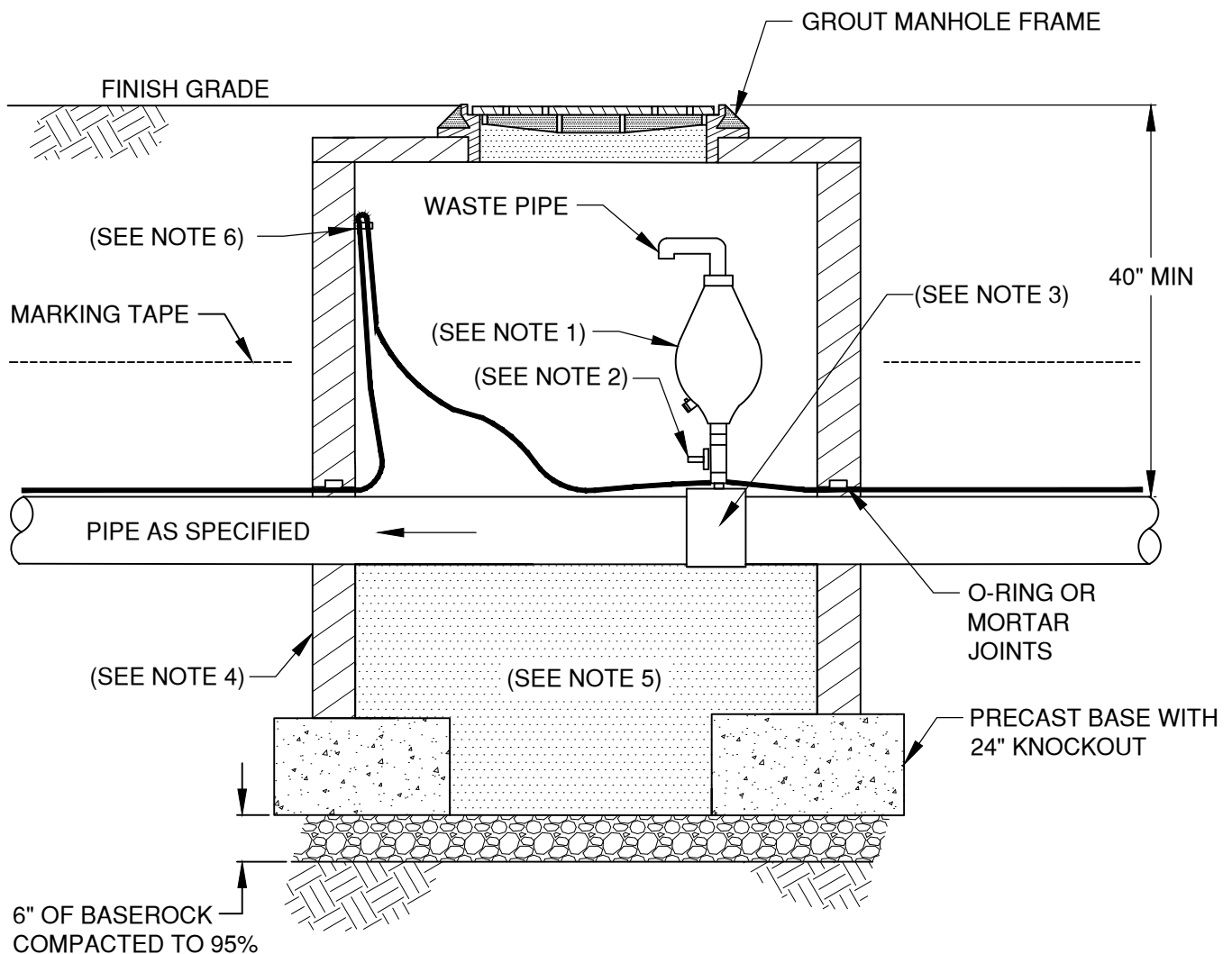
3" & 4" PRESSURE SEWER LINE TERMINATION CLEANOUT

SCALE NTS

DATE 01/31/2022


APPR

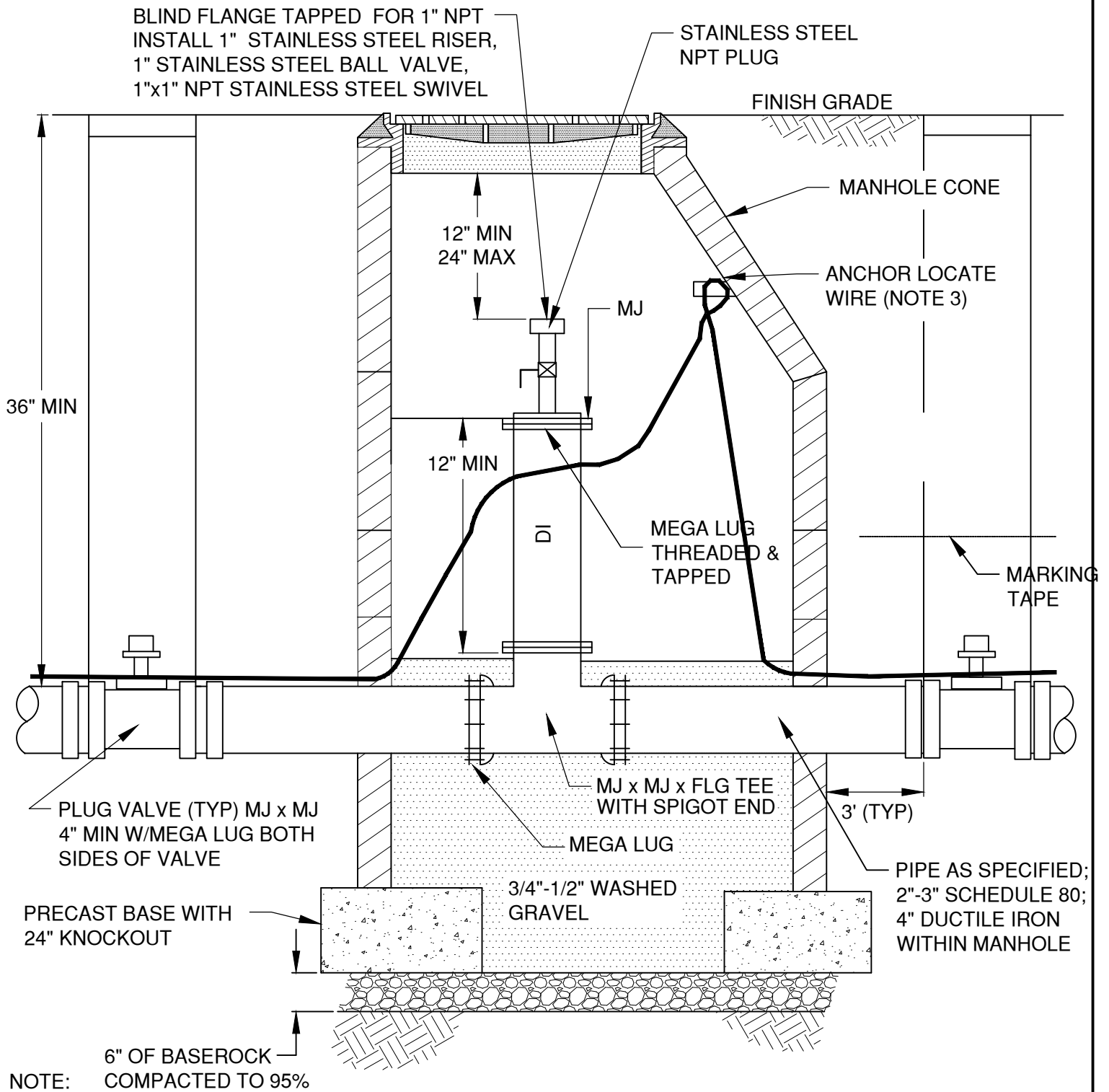
STD DWG S-5




NOTES:

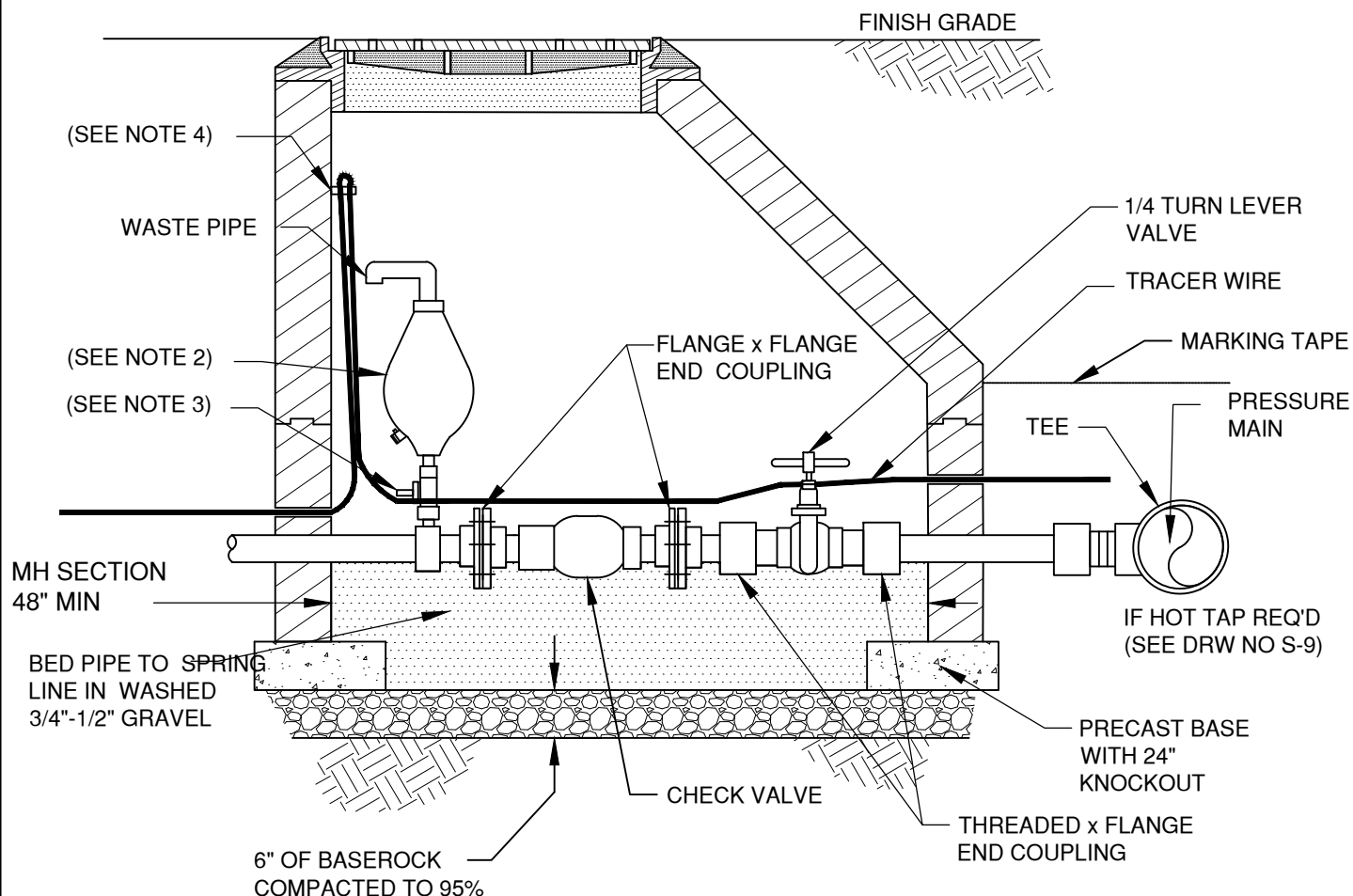
1. 2" COMBINATION AIR VALVE(SHORT VERSION) PER. 00445.11(I)(2)(d)
2. 2" STAINLESS STEEL BALL VALVE
3. 2" TEE OR 2" SADDLE TEE AS APPROVED FOR PRESSURE APPLICATIONS
4. 48" DIAMETER FLAT TOP MANHOLE.
5. 3/4"-1/2" WASHED GRAVEL
6. TRACER WIRE SHALL BE EXTENDED WITHIN 18-INCHES OF FINISHED GRADE OR 6" BELOW LOWEST GRADE RING, WHICH EVER IS GREATER, TO A 1.75-INCH STAINLESS STEEL RUBBER CUSHIONED CLAMP MOUNTED TO MANHOLE WITH AS MIN 1/4" X 1-3/4" CONCRETE ANCHOR SCREW.

DRAWN AJD			CITY OF BEND	CITY OF BEND		STANDARD DRAWING		710 NW WALL ST., BEND, OREGON 97701		SCALE NTS	
DIV SANITARY				AIR RELEASE/VAC BREAKER PRESSURE SEWER MH						DATE 01/31/2022	
REV	DATE									APPR	
										STD DWG S-6	



1. ALL DUCTILE IRON FITTINGS THROUGH MANHOLE
2. 48" MINIMUM DIAMETER MANHOLE
3. TRACER WIRE SHALL BE EXTENDED WITHIN 18-INCHES OF FINISHED GRADE OR 6" BELOW LOWEST GRADE RING, WHICH EVER IS GREATER, TO A 1.75-INCH STAINLESS STEEL RUBBER CUSHIONED CLAMP MOUNTED TO MANHOLE WITH AS MIN 1/4" X 1-3/4" CONCRETE ANCHOR SCREW.

DRAWN AJD		CITY OF BEND STANDARD DRAWING 710 NW WALL ST., BEND, OREGON 97701	SCALE NTS
DIV SANITARY			DATE 01/31/2022
REV DATE			APPR
	CITY OF BEND	MAIN LINE CLEANOUT PRESSURE SEWER	STD DWG S-7



TYPICAL INSTALLATION IN TRAFFIC AREA

NOTE:

1. SHOWN WITH PLUG VALVE IN ENCLOSURE
2. 2" COMBINATION AIR VALVE (SHORT VERSION) PER. 00445.11(l)(2)(d)
3. 2" STAINLESS STEEL BALL VALVE
4. TRACER WIRE SHALL BE EXTENDED WITHIN 18-INCHES OF FINISHED GRADE OR 6" BELOW LOWEST GRADE RING, WHICHEVER IS GREATER, TO A 1.75-INCH STAINLESS STEEL RUBBER CUSHIONED CLAMP MOUNTED TO MANHOLE WITH AS MIN 1/4" X 1-3/4" CONCRETE ANCHOR SCREW.

DRAWN A.JD
DIV SANITARY
REV DATE



CITY OF BEND

CITY OF BEND

STANDARD DRAWING

710 NW WALL ST., BEND, OREGON 97701

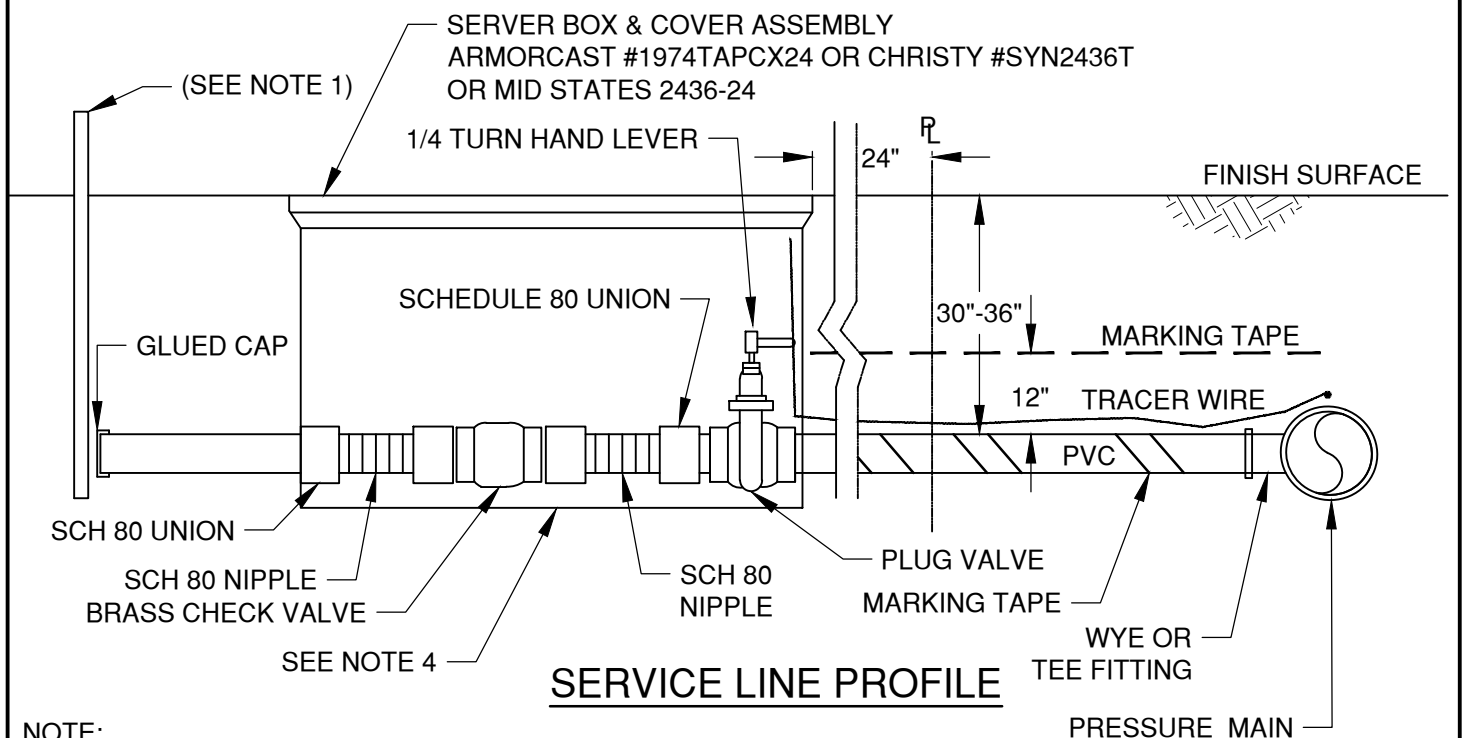
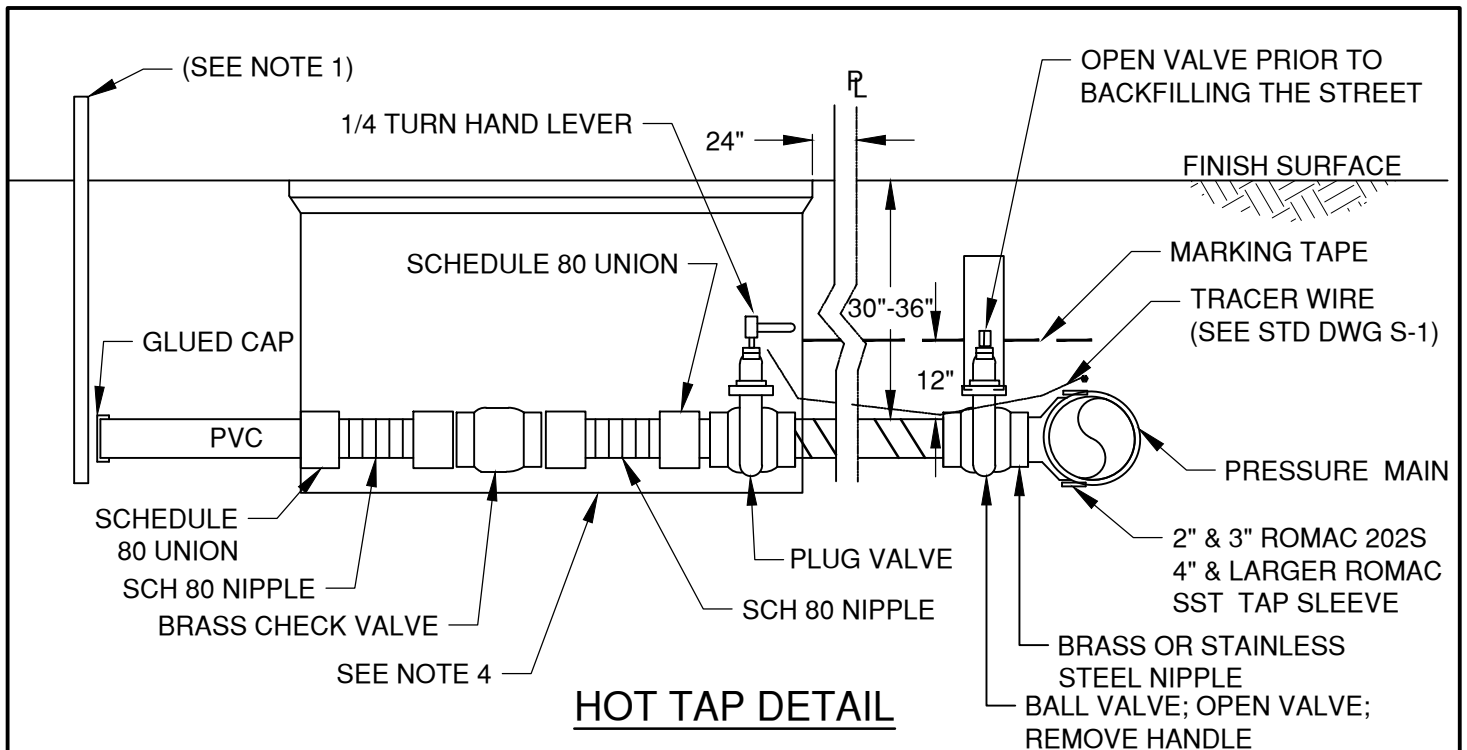
PRESSURE SEWER SERVICE - TRAFFIC AREA

SCALE NTS

DATE 01/31/2022


APPR

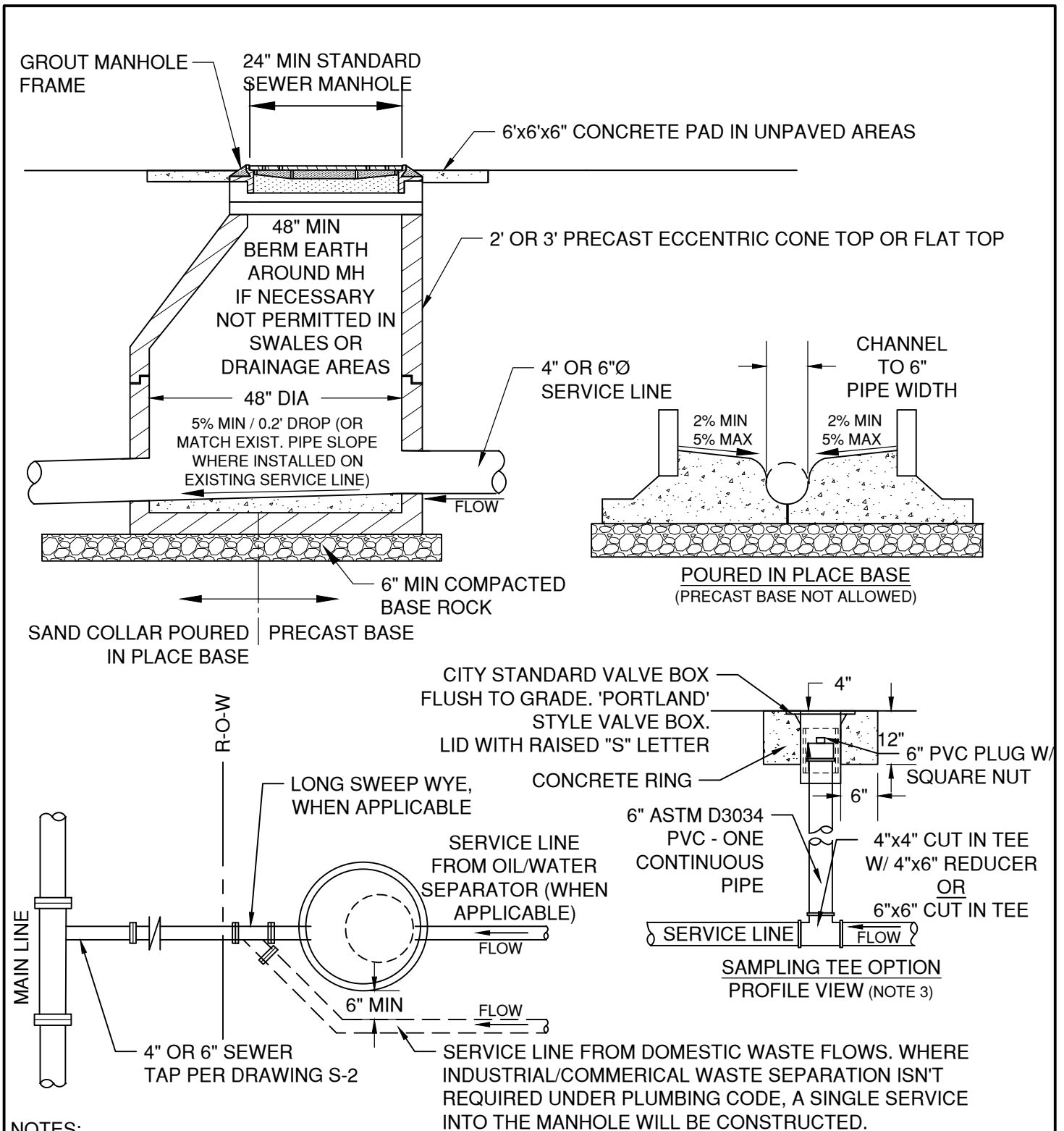
STD DWG S-8



NOTE:

1. 2x4 SERVICE MARKER TO FULL DEPTH OF TRENCH. PROJECT END 2FT MINIMUM ABOVE FINISH GRADE & PAINT GREEN ALL AROUND
2. SERVICE BOX COVER MARKED "SEWER"
3. CHECK VALVES 3" & LARGER APCO 100. 2" LEGEND T451
4. SERVICE BOX AND ALL APPARATUSES WITHIN ARE PRIVATELY OWNED BUT REQUIRED TO BE INSTALLED WITH PRESSURE SEWER SERVICE

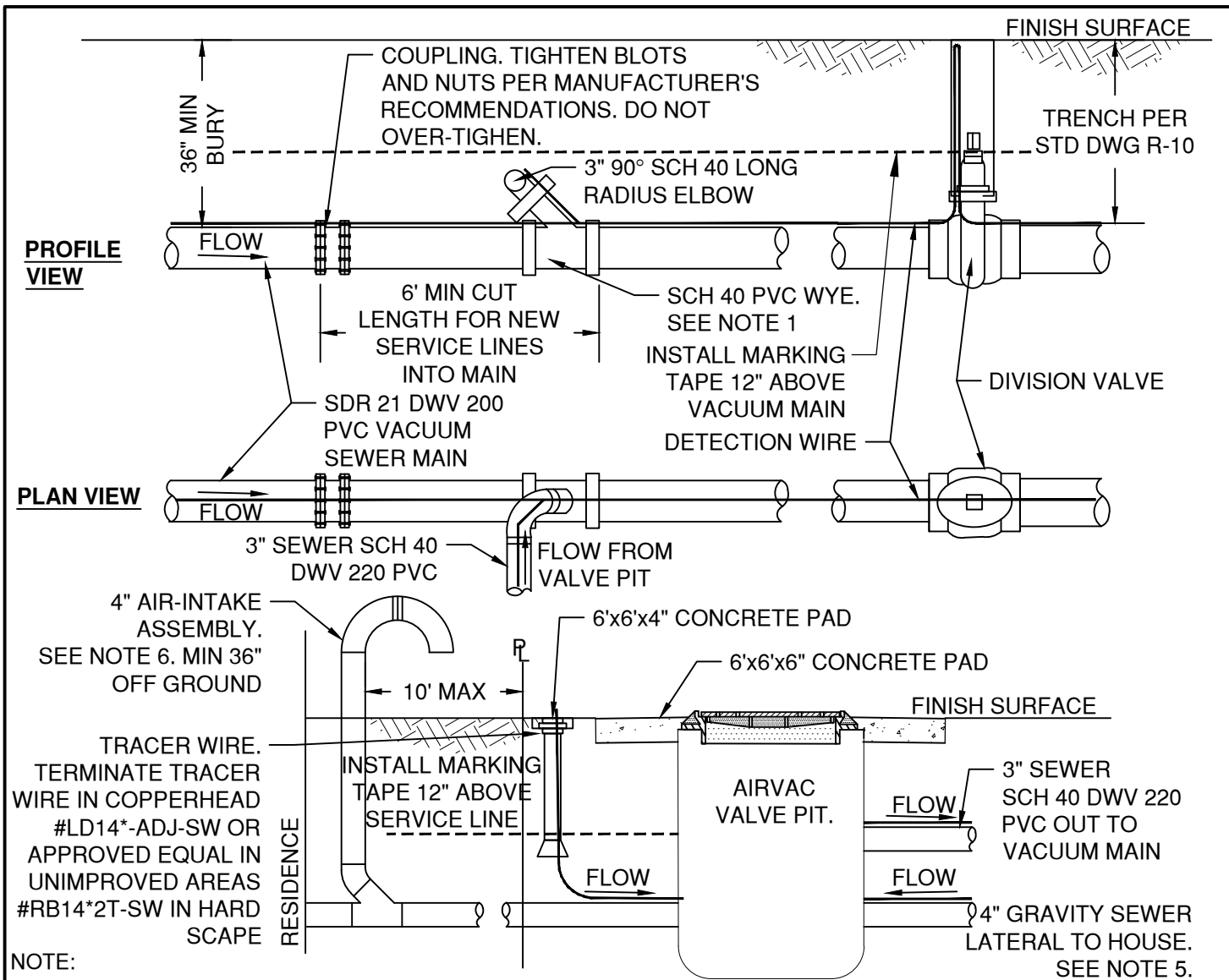
DRAWN AJD DIV SANITARY REV DATE	 CITY OF BEND	CITY OF BEND STANDARD DRAWING 710 NW WALL ST., BEND, OREGON 97701 PRESSURE SEWER SERVICE - NON TRAFFIC AREA		SCALE NTS DATE 01/31/2022 APPR STD DWG S-9
---------------------------------------	--	--	--	---




NOTES:

1. MULTIPLE SERVICE LINES SHALL CONNECT UPSTREAM AND OUTSIDE THE SAMPLE MANHOLE
2. SAMPLE MANHOLE TO BE LOCATED ON PRIVATE PROPERTY IN AN ACCESSIBLE AREA.
3. SAMPLING TEE OPTION IS ONLY PERMITTED WHEN APPROVED BY THE CITY ENGINEER AND ARE INTENDED FOR RETROFITS ON EXISTING SYSTEMS ONLY. CONSIDERED IN SITUATIONS WHERE EXISTING UTILITIES OR EASEMENTS PREVENT THE INSTALLATION OF MANHOLE.

DRAWN AJD DIV SANITARY REV DATE	 CITY OF BEND	CITY OF BEND STANDARD DRAWING 710 NW WALL ST., BEND, OREGON 97701 INDUSTRIAL AND COMMERCIAL SERVICES SAMPLING MH	SCALE NTS DATE 01/31/2022 APPR STD DWG S-15
---------------------------------------	--	---	--



1. ALL WORK DONE ON A VACUUM SEWER SHALL BE COORDINATED WITH PUBLIC WORKS 7 DAYS IN ADVANCE TO COORDINATE VACUUM STATION SHUT DOWN.
2. ALL JOINTS TO BE CONNECTED USING STANDARD PRIMER AND SOLVENT CEMENT. KEEP ALL JOINTS CLEAN AND FREE OF DEBRIS. JOINTS TO BE SCH40 DWV 220 OR APPROVED EQUAL.
3. AFTER INSTALLATION IS COMPLETE, OPEN DIVISION VALVE AND PERFORM VISUAL AND AUDIBLE INSPECTION OF EACH JOINT FOR LEAKS PRIOR TO TRENCH CLOSURE.
4. TRENCH BACKFILL TO BE IN ACCORDANCE TO S-1. MARKING TAPE AND TRACER WIRE TO BE INSTALLED ON ALL MAINS AND SERVICES.
5. INSTALL GRAVITY SEWER LATERALS IN CONFORMANCE WITH PLUMBING CODE. SERVICE LINE FROM THE PIT TO THE HOUSE IS OWNED AND MAINTAINED BY PROPERTY OWNER. CONNECTIONS TO THE AIRVAC VALVE PIT SHALL BE MADE AS PER MANUFACTURER'S SPECIFICATION.
6. AIR-INTAKE SHALL BE INSTALLED IN CONFORMANCE TO THE PLUMBING CODE AND SHALL BE PERMITTED WITH THE BUILDING DEPARTMENT UNDER A PLUMBING PERMIT.
7. PIT TO BE INSTALLED OUTSIDE OF SIDEWALK AND APRON SURFACES IN ROW OR CITY EASEMENT.
8. ALL WORK SHALL CONFORM TO AIR VAC SPECIFICATIONS. NO MORE THAN TWO SERVICES MAY CONNECT TO A ONE VACCUM PIT.
9. CONNECTION AVAILABILITY TO VALVE PIT TO BE DETERMINED BY THE CITY ENGINEER BASED ON MANUFACTURERS ALLOWABLE FLOW INTO PIT AND THE VACUUM SYSTEM.

DRAWN AJD			CITY OF BEND	CITY OF BEND		710 NW WALL ST., BEND, OREGON 97701	SCALE NTS
DIV SANITARY				DATE 01/31/2022			
REV	DATE			APPR			
				STD DWG S-16			
				VACUUM SEWER SERVICE			